

R PISCES

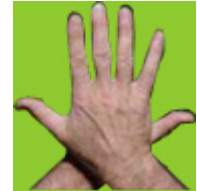


1

SELF-SACRIFICE



R V C R



R GALL BLADDER Light Green/Freedom

The first organ to form when you are making them in the womb is the gall bladder and in it is freedom. It produces a bitter solution used in the digestion.

In the negative it is manic depression; from hope to despair ad nauseam. The positive states in the right eye are Freedom, Self-Reliance, Hope and Satisfaction. The negative are Manic Depression (We chase what we want until it nearly drags us to death), Aggressive Depression (resisting emotional attachment to men), Cyclothymic personality (changing position or opinion but not the mind) and Schizo-Affective personality (standing in the gutter for fear of being pushed there).

The train has a lot to do with the gall bladder, the engine is hope, the carriages are despair. It is about survival and matters of life and death, seduction, addiction, jealousy, birds and ants. Rubber condoms are a manifestation of the gall bladder.

In the left eye the gall bladder checks with the bladder and the kidneys and the cards are the fives. The most common illusion has to do with the five of pentacles being attached to suffering, never being what is aware of the suffering. The major arcana card is the Death/Transformation.

The points are the left cheek, left top shoulder blade and the left buttock. And in the left eye the right forehead and right top shoulder are in the circuit.

In the Chi Chi, the points in the body are: R- Left top back skull and vertebra T1, V- Right side of nose, C- Between top of shoulder blades, R- Left top of shoulder blade.

During the Gallbladder Chi Chi remember that your centre is freedom, and the circumference is LOVE.

Right EYE



R R R R R

FREEDOM

PISCES

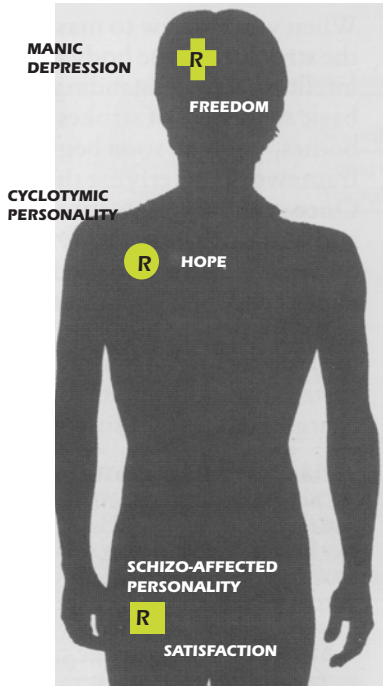
R



Left EYE



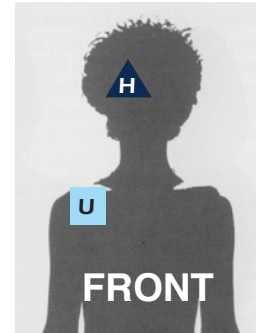
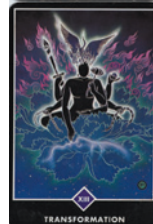
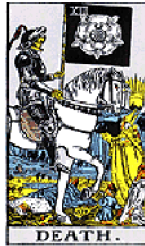
R H R U



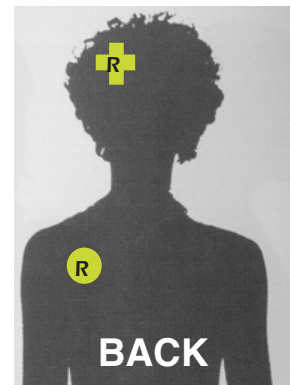
BACK



FRONT



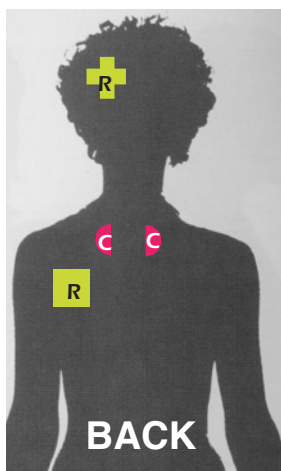
FRONT



BACK

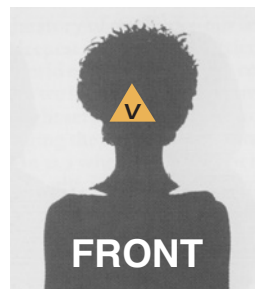
- R** I HAVE TOO MANY PROBLEMS
TOTALITY
- H** I AM THE SUFFERING
THE OUTSIDER
- R** MY HEART IS BROKEN
CLINGING TO THE PAST
- U** I CAN BEAT DOUBT
COMPARISON

Chi Chi R V C R



BACK

- R** I HAVE TOO MANY PROBLEMS
TOTALITY
- V** I FIND NO FRIEND
LETTING GO
- C** I KNOW HOW TO RELATE
TRUST
- R** I AM THE SERVANT OF MY MIND
THE SOURCE



FRONT



~~R L C P
H V A O
R L C P
U J D R~~

GALLBLADDER
FREEDOM
TESTES/OVARIES
VITALITY
BRAIN
IDENTITY
COLON
IN STEP